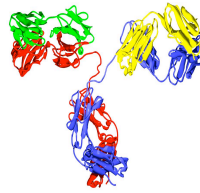


# Epigenetic Antibodies

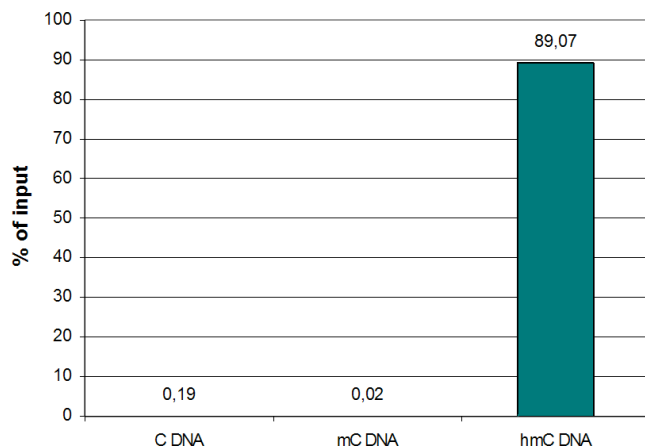


Post-translational modifications of histones and DNA methylation are critical regulators of transcription and genome function, and are required for maintaining discrete regions of active and inactive chromatin. BPS offers a broad selection of rigorously tested antibodies recognizing methylated cytosines, modified histones and chromatin modification proteins.

## Modified Cytosine Antibodies

Antibody	Cat. #	Size	Applications
3 mC PAb	25200	50 µg	DB
5 caC PAb	25201	20 µg	DB; IF; DNA IP
5 hmC MAb	25202	20 µg	hMeDIP; DB; ELISA; IF
5 hmC PAb	25203	50 µg	hMeDIP; ELISA; DB
5 hmC PAb	25204	20 µl	hMeDIP; ELISA; DB
	25205	100 µl	
5 mC MAb (33D3)	25206	10 µg	MeDIP; ELISA; DB; IF; FISH; SB
	25207	100 µg	

hMeDIP using anti - 5-hmC



hMeDIP using anti- 5-hydroxymethylcytosine (Cat. No. 25203). The antibody is highly specific for the 5-hmC base modification (no IP with non-methylated or methylated cytosine).

## Histone Antibodies (unmodified)

Antibody	Cat. #	Size	Applications
H1.0 PAb	25225	100 µl	ELISA
H2A pan PAb	25226	50 µg	Ch; ELISA; DB
H2A.Zac PAb	25228	50 µg	Ch; CS; ELISA; DB; IF
H2B pan PAb	25231	50 µg	Ch; ELISA; DB
H3 pan PAb	25235	100 µl	Ch; ELISA; DB; WB
H4 pan PAb	25278	50 µg	Ch; ELISA; DB

## Modified Histone Antibodies

Antibody	Cat. #	Size	Applications
H2AK5ac PAb	25230	50 µg	Ch; CS; ELISA; DB; WB
H2AK119ub PAb	25229	50 µg	Ch; ELISA; DB; WB
H2A.XS139p PAb	25227	50 µg	ELISA; DB; WB
H2BK12ac PAb	25232	50 µg	Ch; CS; ELISA; DB; WB
H2BS14p MAb	25234	50 µg	ELISA DB; WB
H2BK15ac PAb	25233	50 µg	Ch; CS; ELISA; DB; WB
H3K4un MAb	25258	50 µg	Ch; ELISA; WB; IF
H3K4ac PAb	25251	50 µg	Ch; ELISA; DB; WB; IF
H3K4me1 MAb	25252	50 µg	Ch; ELISA; WB; IF
H3K4me1 PAb	25253	50 µg	Ch; CS; ELISA; DB; WB
H3K4me2 MAb	25254	50 µg	Ch; ELISA; WB; IF
H3K4me2 PAb	25255	100 µl	Ch; CS; ELISA; DB; WB; IF
H3K4me3 MAb	25256	100 µl	Ch; CS; ELISA; WB; IF
H3K4me3 PAb	25257	50 µg	Ch; DB; WB; IF
H3K9un MAb	25274	50 µg	Ch; ELISA; DB; WB; IF
H3K9ac MAb	25265	50 µg	Ch; CS; ELISA; DB; WB; IF
H3K9ac PAb	25266	50 µg	Ch; CS; ELISA; WB; IF
H3K9acS10p PAb	25267	100 µl	Ch; CS; ELISA; DB; WB
H3K9/14ac PAb	25264	50 µg	Ch; CS; ELISA; DB; WB
H3K9me1 PAb	25268	50 µg	Ch; ELISA; DB; WB; IF
H3K9me2 MAb	25269	50 µg	Ch; ELISA; DB; WB
H3K9me2 PAb	25270	50 µg	Ch; ELISA; WB; IF
H3K9me3 MAb	25271	50 µg	Ch; ELISA; DB; WB; IF

**Abbreviations:** Ch: Chromatin Immunoprecipitation (ChIP); CS: ChIP-sequencing; DB: Dot blot; ELISA: Enzyme-linked Immunosorbent Assay; IC: Immunocytochemistry; IF: Immunofluorescence; FISH: Fluorescence *in situ* hybridization; MeDIP: Methylated DNA Immunoprecipitation; hMeDIP: Hydroxymethyl DNA Immunoprecipitation; SB: Southern blot; WB: Western blot; MAb: Monoclonal Antibody; PAb: Polyclonal Antibody; pan: pantropic; caC: carboxylcytosine; mC: methylcytosine; hmC: hydroxymethylcytosine